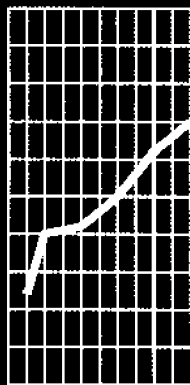




July 1996

Tasmanian Statistical Indicators



ABS Catalogue No. 1303.6



Embargoed until 11.30 a.m. Monday 8 July 1996

**TASMANIAN STATISTICAL INDICATORS
JULY 1996**

**John H. Struik
Acting Deputy Commonwealth Statistician**

AUSTRALIAN BUREAU OF STATISTICS

CATALOGUE NO. 1303.6



CONTENTS

	Page
MAIN FEATURES	v
TABLES	
1 Population	1
2 Births, deaths and marriages registered	1
3 Labour force status—seasonally adjusted and trend series	2
4 Labour force status by region and Tasmania, males	3
5 Labour force status by region and Tasmania, females	4
6 Labour force status by region and Tasmania, persons	5
7 Teenage labour market	6
8 Employed persons by occupation	7
9 Employed wage and salary earners, sector and industry	8
10 Average hours worked	8
11 Job vacancies	9
12 Industrial disputes	9
13 Average weekly earnings of employees	10
14 Weekly award rates of pay indexes	10
15 Summary of annual movements in wages and prices	11
16 House price index numbers, Hobart	11
17 Consumer price index	12
18 Price index of materials used in building other than house building	13, 14
19 Miscellaneous indicators of production (production of selected commodities)	15
20 Livestock slaughtering, numbers	16
21 Livestock slaughtering—seasonally adjusted and trend series	16
22 Meat production, Tasmania	17
23 Principal mineral concentrates produced	17
24 Sawmills and plywood mills: logs delivered and timber produced	18
25 Chipping and grinding of wood	18
26 Logs delivered for milling or chipping	19
27 Building approvals	20
28 Dwelling commencements	20

-
- INQUIRIES
- *for further information about statistics in this publication and the availability of related unpublished statistics, contact the Hobart office of the ABS on (002) 20 5800.*
 - *for information about other ABS statistics and services, please refer to the back page of this publication.*
-

	Page
29 Banking statistics	21
30 Private new capital expenditure by type of asset	21
31 Passenger arrivals and departures	22
32 Passenger arrivals by air and sea into Tasmania	22
33 Accommodation statistics	23
34 Registrations of new motor vehicles	24
35 Turnover of retail establishments at current prices	24
36 Major Statistical Indicators—Australian and State figures	25
EXPLANATORY NOTES	26

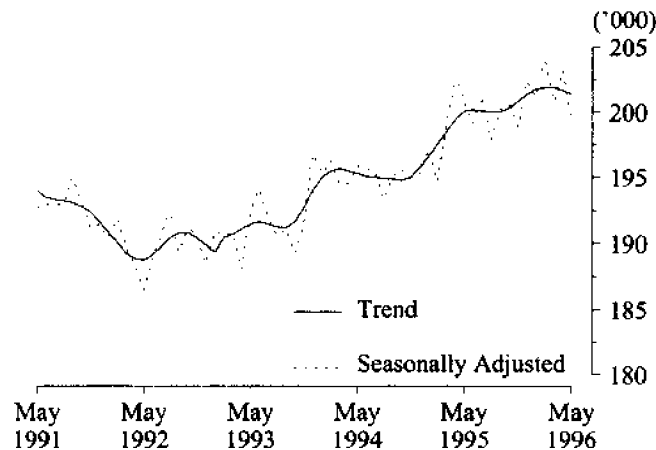
MAIN FEATURES

EMPLOYMENT

States' trend series comparisons

The Australian and State *trend series* comparisons are given on page 25. There was an increase of 0.6% in Tasmania's employment over the year to May 1996 to 201,400. The largest percentage increase in employment was in New South Wales (1.1%). The next highest percentage increase in employment was in Victoria (1.0%), followed by Queensland (0.9%) and South Australia (0.7%). There was no change in Western Australia's employment.

EMPLOYMENT, TASMANIA



Regional Tasmania's original series figures

In the Hobart and Southern Statistical Divisions the estimate of *unadjusted* employment was the same in March 1995 and March 1996: 101,500. Employment in the Northern Statistical Division increased by 1,600 between March 1995 and March 1996 to 56,400. The estimate of employment in the Mersey-Lyell Statistical Division was 43,700 in March 1996, compared to 43,600 in March 1995.

(See tables 3-8, pages 2-7.)

UNEMPLOYMENT

Tasmania's trend series figures

The Tasmanian provisional *trend series* estimate of 23,500 unemployed persons in May 1996 was an increase of 1,200 on the figure for May 1995 of 22,300. The provisional *trend series* estimate of the unemployment rate of 10.4% in May 1996 compared with 10.0% in May 1995.

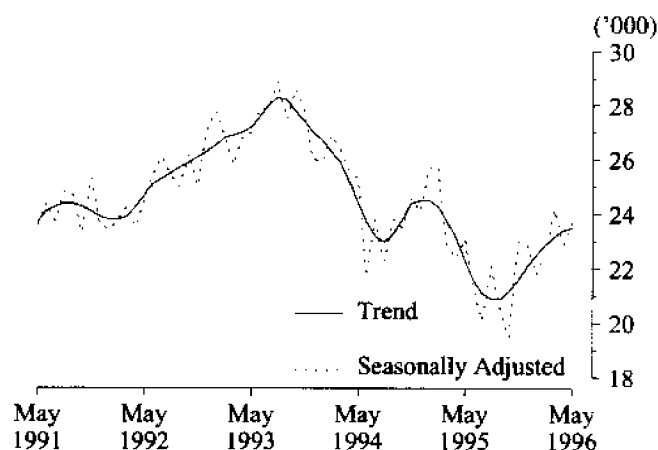
(See tables 3-8, tables 2-7.)

THE LABOUR FORCE

Tasmania's trend series figures

In May 1996 there was an *unadjusted* estimate of 368,400 civilian Tasmanians aged 15 or more. There were an estimated 224,900 persons (based on *trend series* estimates) in the labour force. The estimate of the labour force participation rate in May 1996 was 61.0%, compared with 60.6% in May 1995.

UNEMPLOYMENT, TASMANIA



For males, the *trend series* estimate of the participation rate was 72.3%, compared with 71.1% for May 1995. For females, the *trend series* estimate of the participation rate was 50.1%, compared with 50.4% in May 1995. (See table 3, page 2.)

EMPLOYED WAGE AND SALARY EARNERS

In March 1995 there were approximately 137,600 employed wage and salary earners in Tasmania. In March 1993 the figure was 147,100 employed wage and salary earners.

In February 1995 the Tasmanian public sector accounted for 31.7% of all employed wage and salary earners. Overall, the category Community services had the highest industry representation (27.8%, compared with the equivalent figure of 24.9% recorded in February 1993). The next highest industry grouping was Wholesale trade and Retail trade (19.4%, compared with 20.8% in February 1993) and Manufacturing (15.2%, compared with 14.8% in February 1993).

In February 1995, women made up 45.5% of employed wage and salary earners. In February 1993, the equivalent figure was 44.8%. (See table 9, page 8.)

AWARD RATES OF PAY INDEXES

The annual movement from April 1995 to April 1996 of weekly award rates of pay indexes for Tasmania rose by 1.3% for full-time adult females and by 1.1% for full-time adult males, for a combined annual increase of 1.2%. For Australia, the figures were 1.6% for females and 1.1% for males, for a combined annual increase of 1.3%.

For full-time adult female employees in Tasmania, the largest industry increases over this twelve-month period occurred in the Manufacturing industry (3.2%); and the Public administration and defence industry (3.0%).

For the same period for full-time adult male employees in Tasmania, the largest industry increases occurred in the Transport and storage industry (3.2%); and the Wholesale and retail trade industry (2.2%).

The largest occupation increase over the same period for full-time adult female employees occurred in Tradespersons (3.5%); Labourers and related workers (1.8%); and Clerks (1.8%).

For full-time adult male employees the largest occupation increases over the period occurred in Clerks (1.7%); and Salespersons and personal services workers (1.7%).

(See table 14, page 10.)

BUILDING MATERIALS PRICE INDEXES

For the twelve months ending April 1996, the price index for house building materials in Hobart increased by 1.7%, which was the largest change for any State capital over that period. Falls were recorded in all other State capitals except Perth and Sydney, where the index rose by 0.4% and 0.3% respectively over the twelve months. The national index fell by 0.9% for the same period.

For materials used in other than house building, the price index in Hobart stayed steady from March to April 1996, but rose by 1.4% for the year ending April. The largest increase for a State capital recorded for the year was in Perth, at 1.7%. The national index rose by 1.3% for the year.

Components which registered the largest change in Hobart over the year to April were structural steel (up 5.8%), and structural timber (down 7.1%).

Sources: *Price Index of Materials Used in House Building*, April 1996, ABS catalogue number 6408.0, released on 7 June 1996, \$13.00.

Price Index of Materials Used in Other Than House Building, April 1996, ABS catalogue number 6407.0, released on 7 June 1996, \$15.00.

HOUSE PRICE INDEXES

The price index for established houses in Hobart rose by 0.3% over the twelve months ending March 1996. Other State capitals showing rises were Sydney (0.4%) and Darwin (6.1%). The index fell in all other State capitals, with the national weighted average being down 0.9%.

Project home price indexes rose in Hobart by 1.4% for the year ending March 1996, with the highest rises being recorded in Darwin (3.9%) and Sydney (3.0%). A 3.9% fall was recorded in Canberra over the same period. The national average for the twelve-month period was an increase of 1.4%.

Source: *House Price Indexes*, March quarter 1996, ABS catalogue number 6416.0, released on 6 June 1996, \$13.00.

HOUSING FINANCE

The trend estimate, for the number of new secured housing finance commitments entered into in Tasmania in April 1996 was 873 dwellings, a decrease of 1.7% on the previous months figure of 888. The value of these new commitments was \$60.8 million down 1.5% on the March value of \$61.7 million.

During the twelve months ended April 1996 the trend estimate for the number of Tasmanian dwelling commitments decreased 0.9% from 881 to 873 dwellings. The value of these commitments rose 6.9% from \$56.9 million to \$60.8 million. Nationally the total number of Australian dwelling commitments increased 13.9% from 33,878 to 38,592 dwellings and the value increased 14.5% from \$3,276.2 million to \$3,751.4 million.

Source: *Housing Finance for Owner Occupation*, ABS catalogue number 5609.0, released on 11 June 1996, \$14.00.

LIVESTOCK SLAUGHTERING

Trend estimates The April 1996 Tasmanian trend estimate for the slaughtering of cattle and calves was 0.9% lower than that recorded in March 1996. The number of pigs slaughtered in the same period decreased by 0.1%, while the number of sheep and lambs slaughtered decreased by 2.3%.

The trend estimate for slaughtering sheep and lambs was 60,710 in April 1996, which was 23.2% below that recorded in April 1995. The slaughtering of sheep and lambs continued to decline for the fourth successive month.

The trend estimate of 6,816 pigs slaughtered in April 1996 was 12.9% below that recorded in April 1995.

The cattle and calves slaughtering trend estimate decreased for the fourth successive month. The number of cattle and calves slaughtered in April 1996 was 16,876, which was 25.1% below that recorded in April 1995. *(See table 20, page 16.)*

PRIVATE NEW CAPITAL EXPENDITURE

Total new capital expenditure in Tasmania, for the March quarter 1996 was \$140 million. This was more than 32% below that recorded for the March quarter 1995. The figure was similar to that recorded for the December quarter 1995.

Forty per cent of the expenditure was by the Manufacturing industry and nearly 33% was by the Mining industry. More than two-thirds of the expenditure, was for Equipment, Plant and Machinery. *(See table 30, page 21.)*

SURVEY OF TOURIST ACCOMMODATION

Room nights occupied in hotels, motels and guest houses, in Tasmania, increased by 2.1%, from 330,306 in the March quarter 1995 to 337,206 in the March quarter 1996. This was the highest number of room nights recorded for a March quarter.

During the twelve months to 31 March 1996 the number of rooms available increased by 2.6%. Consequently the room occupancy rate fell from 68.2% to 67.1% but was still quite high compared to other March quarter results in recent years.

The number of unit nights for holiday flats, units and houses decreased by 14.5% from 56,752 in March quarter 1995 to 48,512 in the March quarter 1996. Caravan park site nights occupied increased by 3.5%, from 241,344 to 249,856 during the same period.

In terms of average takings per night occupied, moderate increases were recorded for all accommodation types. *(See table 33, page 23.)*

BUILDING APPROVALS

There were 245 new dwelling units approved during April 1996 in Tasmania. This was an increase of 48% on the number recorded for March 1996 (165) and a 23% increase on the number recorded for April 1995 (199).

For the twelve months ended April 1996 there were 2,629 new dwelling units approved, 22% below the 3,367 units recorded for the twelve months ended April 1995.

The highest number of dwelling units approved in April 1996 was recorded by the City of Hobart with 36, followed by the City of Launceston with 35, the City of Devonport with 27 and the City of Glenorchy with 21.

The value of all building approved, at current prices, in April 1996 was \$38.3 million, 32% above the March 1996 figure of \$29.1 million and 8% above the April 1995 figure of \$35.4 million. The value of all buildings approved, at average 1989-90 prices, in the March quarter 1996 was \$119.7 million, 29% above the December quarter 1995 figure and 32% below the figure recorded for March quarter 1995.
(See table 27, page 20.)

RETAIL

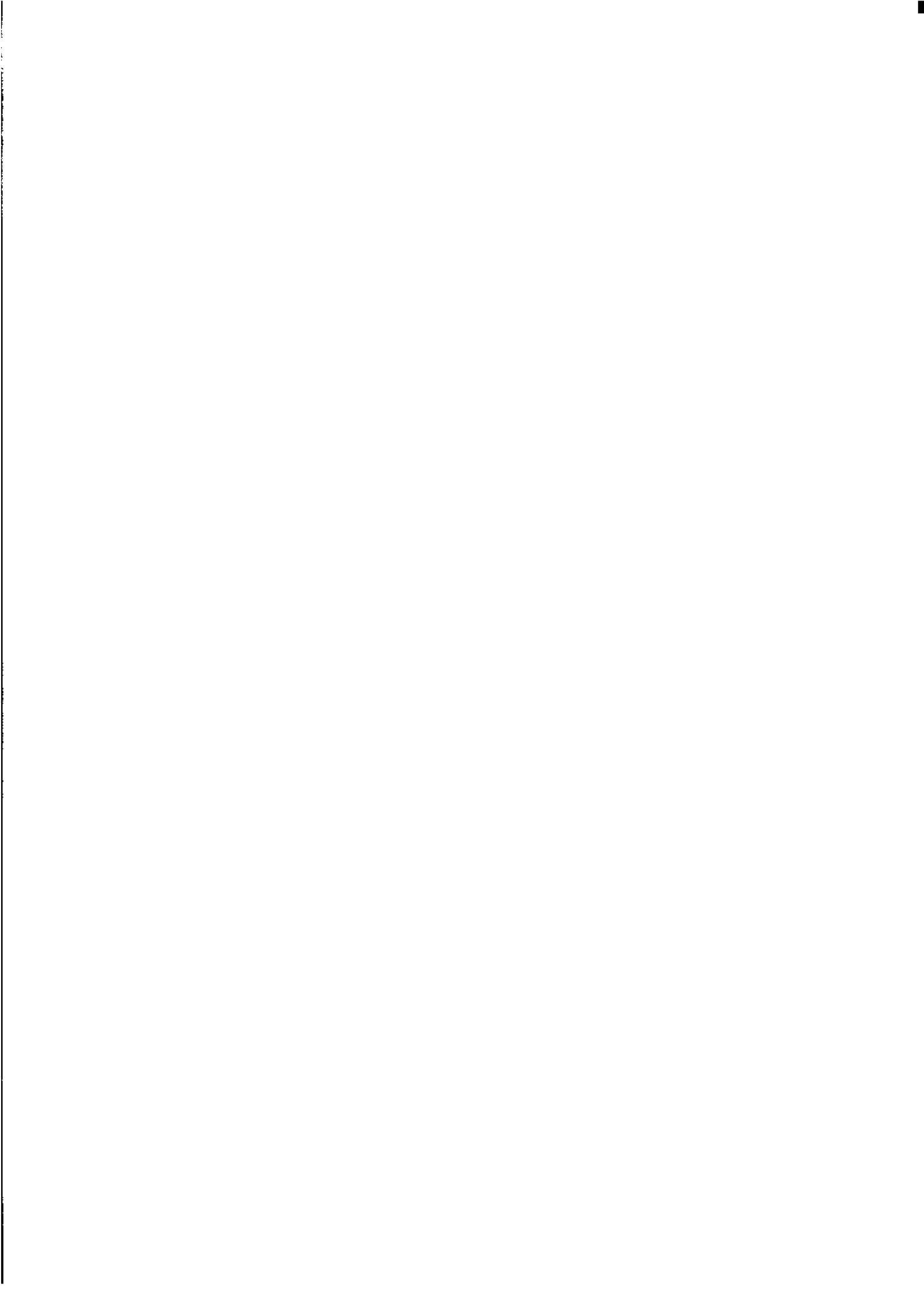
The trend estimate for turnover of retail and selected service establishments for April 1996, in Tasmania, was \$246.7 million, an increase of 4.5% on the April 1995 figure of \$236.1 million. The trend estimate growth rate has eased from 0.8% in November 1995 to 0.1% in April 1996. Hospitality and services is the only group to show strong growth in recent months.

The trend estimate of turnover for April 1996, for Australia (\$10,212.2 million), was 7% higher than for April 1995 (\$9,548.1 million). The trend estimate of retail turnover increased by 0.2% between March 1996 and April 1996. The trend estimate has increased, at a declining rate, for the past eleven months. Growth in the trend estimate for Retail and hospitality and services industries has eased over recent months following a period of six months of steady moderate growth.

In original terms, the estimate of retail turnover in April 1996, for Tasmania, was \$237.8 million, 3.5% above the figure recorded for April 1995 (\$229.7 million).
(See table 35, page 24.)

NEW MOTOR VEHICLE REGISTRATIONS

There were 818 new motor vehicles (excluding motorcycles) registered in Tasmania during April 1996. This was 15% below the 961 registered in March 1996 and just below the figure for April 1995 (819).
(See table 34, page 24.)



1

POPULATION, TASMANIA

Year or quarter	Estimated resident population at end of period	Natural increase ¹	Net estimated migration gain	Total population growth	Annual growth rate ²
	'000	'000	'000	'000	%
Year ended 30 June					
1992	469.7	3.2	- 0.3	2.9	0.62
1993	471.4	3.1	- 1.5	1.7	0.35
1994	472.5	3.1	- 2.0	1.1	0.24
1995 p	473.0	2.9	- 2.3	0.6	0.12
Quarter					
1994					
September p	472.8	0.6	- 0.3	0.3	0.19
December p	472.8	0.8	- 0.8	0.0	0.13
1995					
March p	473.2	0.9	- 0.5	0.4	0.21
June p	473.0	0.6	- 0.8	- 0.2	0.12
September p	473.3	0.7	- 0.5	0.2	0.11
December p	473.2	0.5	- 0.6	- 0.1	0.09

¹ Excess of live births registered over deaths registered (based on usual State of residence).
² Percentage growth from same quarter in previous year.
 (Source: Australian Demographic Statistics, ABS catalogue number 3101.0)

2

BIRTHS, DEATHS AND MARRIAGES REGISTERED, TASMANIA

Year or quarter	Births		Deaths		Infant mortality ¹		Marriages	
	No.	Rate ²	No.	Rate ²	Deaths	Rate ³	No.	Rate ²
Year ended 31 December								
1991	6 857	14.7	3 664	7.9	61	8.9	3 069	6.6
1992	6 956	14.8	3 722	7.9	43	6.2	3 081	6.6
1993	6 804	14.4	3 618	7.7	37	5.4	3 055	6.5
1994	6 836	14.5	3 909	8.3	46	6.7	2 887	6.1
1995 p	6 567	13.9	3 793	8.0	46	7.0	2 834	6.0
Quarter								
1993								
December	1 647	..	887	..	6	3.6	786	..
1994								
December	1 702	..	883	..	9	5.9	768	..
1995								
March	p 1 812	..	p 903	..	p 10	p 5.5	1 061	..
June	p 1 613	..	p 1 017	..	p 15	p 9.3	667	..
September	p 1 696	..	p 967	..	p 12	p 7.1	307	..
December	p 1 446	..	P 906	..	p 9	p 6.2	799	..

¹ Registered deaths of children under one year of age.
² Rate per 1,000 of estimated mean population.
³ Rate per 1,000 live births.
 (Source: Australian Demographic Statistics, ABS catalogue number 3101.0)

Month	Seasonally adjusted series.				Trend series ²			
	Employed	Unemployed	Unemployment rate	Participation rate	Employed	Unemployed	Unemployment rate	Participation rate
	'000	'000	%	%	'000	'000	%	%
MALES								
1995								
May	113.9	14.9	11.6	71.4	113.9	14.5	11.3	71.1
June	113.5	14.4	11.3	70.9	113.7	14.2	11.1	70.8
July	114.1	12.9	10.1	70.3	113.5	13.7	10.8	70.5
August	112.6	14.4	11.3	70.3	113.1	13.4	10.6	70.1
September	112.9	13.4	10.6	69.9	112.9	13.2	10.5	69.8
October	113.2	11.7	9.3	69.1	113.0	13.2	10.5	69.9
November	112.8	13.6	10.8	70.0	113.5	13.4	10.6	70.2
December	113.8	14.7	11.4	71.0	114.1	13.8	10.8	70.7
1996								
January	114.7	14.0	10.9	71.1	114.8	14.1	11.0	71.3
February	117.0	14.0	10.7	72.4	115.4	14.5	11.2	71.8
March	115.5	15.0	11.5	72.1	115.7	14.8	11.3	72.1
April	116.3	15.3	11.6	72.6	115.8	15.0	11.5	72.3
May	114.5	15.0	11.6	71.5	115.9	15.1	11.5	72.3
FEMALES								
1995								
May	85.9	8.2	8.7	50.4	86.2	7.8	8.3	50.4
June	85.9	7.0	7.5	49.7	86.5	7.4	7.9	50.3
July	86.5	7.2	7.7	50.2	86.6	7.3	7.8	50.3
August	86.2	7.7	8.2	50.3	86.8	7.5	7.9	50.5
September	87.5	7.1	7.5	50.7	87.1	7.7	8.1	50.7
October	87.9	7.9	8.2	51.2	87.3	8.0	8.4	51.0
November	86.7	9.4	9.8	51.4	87.4	8.2	8.6	51.1
December	88.2	8.2	8.5	51.5	87.3	8.4	8.7	51.1
1996								
January	86.5	7.8	8.2	50.4	86.9	8.4	8.8	51.0
February	86.9	8.4	8.9	50.9	86.6	8.4	8.8	50.7
March	85.3	9.1	9.7	50.4	86.2	8.4	8.9	50.5
April	87.0	7.6	8.0	50.5	85.8	8.4	8.9	50.3
May	84.6	8.7	9.3	49.8	85.5	8.4	8.9	50.1
TOTAL								
1995								
May	199.8	23.1	10.4	60.7	200.1	22.3	10.0	60.6
June	199.4	21.4	9.7	60.1	200.2	21.6	9.7	60.4
July	200.6	20.1	9.1	60.1	200.1	21.1	9.5	60.2
August	198.8	22.1	10.0	60.1	200.0	20.9	9.5	60.1
September	200.4	20.5	9.3	60.1	200.0	20.9	9.5	60.1
October	201.0	19.5	8.9	60.0	200.3	21.2	9.6	60.3
November	199.6	23.0	10.3	60.5	200.9	21.6	9.7	60.5
December	201.9	22.9	10.2	61.1	201.4	22.1	9.9	60.8
1996								
January	201.2	21.8	9.8	60.6	201.8	22.5	10.0	61.0
February	203.9	22.5	9.9	61.5	201.9	22.9	10.2	61.1
March	200.8	24.2	10.7	61.1	201.9	23.2	10.3	61.1
April	203.2	22.9	10.1	61.4	201.7	23.4	10.4	61.1
May	199.2	23.7	10.6	60.5	201.4	23.5	10.4	61.0

¹ For explanation of terms and concepts, refer to *Labour Force, Australia*, ABS catalogue number 6203.0.

² Trend series revised each month. Users should be aware that the latest observations may be revised substantially.
(Source: *Labour Force, Australia*, ABS catalogue number 6203.0)

4

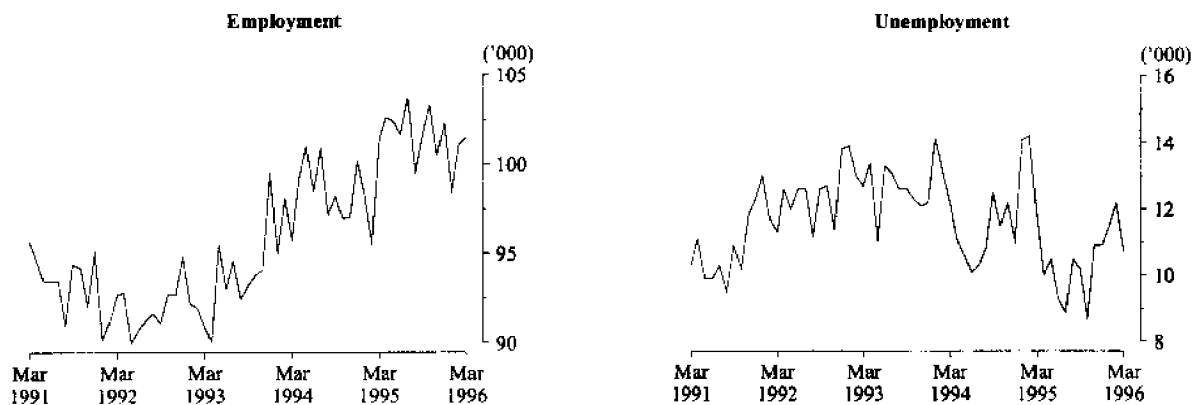
LABOUR FORCE STATUS, BY REGION AND TASMANIA, MALES^{1, 2}

Month		Total employed '000	Total unemployed '000	Unemployment rate %	Participation rate %
HOBART AND SOUTHERN STATISTICAL DIVISIONS					
1993	March	52.2	7.9	13.2	68.8
1995	March	56.8	7.7	11.9	72.3
1996	January	55.6	7.5	11.9	71.3
	February	57.5	7.6	11.7	73.3
	March	57.3	6.9	10.8	72.0
NORTHERN STATISTICAL DIVISION					
1993	March	32.9	4.3	11.6	72.9
1995	March	32.5	3.3	9.3	70.6
1996	January	33.3	4.5	12.0	74.3
	February	33.7	3.8	10.2	74.2
	March	31.4	4.7	13.0	72.3
MERSEY-LYELL STATISTICAL DIVISION					
1993	March	25.9	4.5	14.8	75.8
1995	March	25.3	2.8	9.9	69.6
1996	January	26.1	3.6	12.2	71.6
	February	26.8	3.0	10.0	71.4
	March	27.3	2.9	9.7	71.9
TASMANIA					
1993	March	111.0	16.8	13.1	71.5
1995	March	114.7	13.8	10.7	71.2
1996	January	115.0	15.7	12.0	72.2
	February	117.9	14.4	10.9	73.1
	March	116.0	14.5	11.1	72.1

¹ For explanation of terms and concepts, refer to *Labour Force, Australia*, ABS catalogue number 6203.0.

² Data in this table are original series, i.e. they are not part of a seasonally adjusted or a trend series. Accordingly, care should be exercised when using this data. New monthly data from each quarter (March, June, September and December) is published two months after the quarter. (Source: Labour Force Estimates—microfiche tables.)

Hobart and Southern Statistical Divisions—Persons

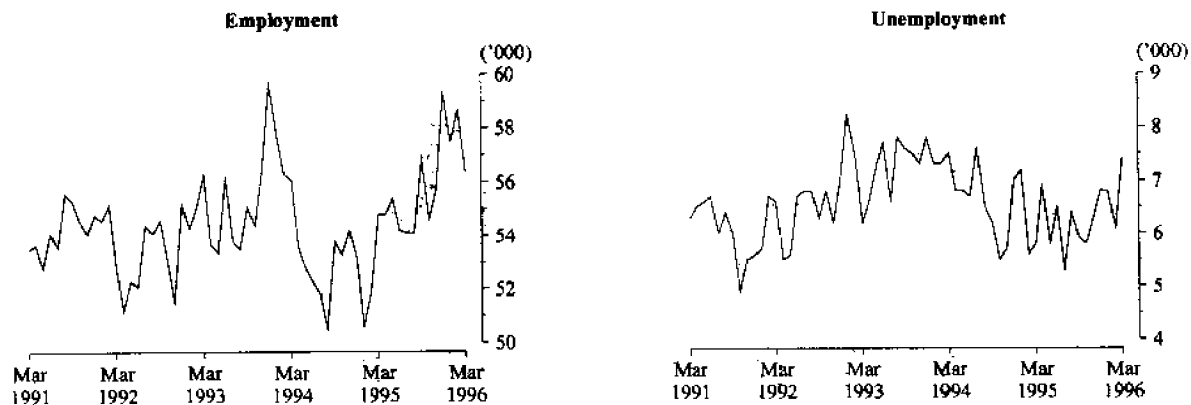


Month		Total employed '000	Total unemployed '000	Unemployment rate %	Participation rate %
HOBART AND SOUTHERN STATISTICAL DIVISIONS					
1993	March	39.6	4.8	10.7	48.9
1995	March	44.6	4.1	8.5	52.2
1996	January	42.9	4.0	8.5	50.4
	February	43.6	4.6	9.5	51.9
	March	44.2	3.8	7.9	51.2
NORTHERN STATISTICAL DIVISION					
1993	March	23.6	1.9	7.5	47.0
1995	March	22.3	2.4	9.8	47.7
1996	January	24.2	2.3	8.5	49.8
	February	25.1	2.3	8.3	52.6
	March	25.1	2.7	9.7	53.9
MERSEY-LYELL STATISTICAL DIVISION					
1993	March	17.2	2.0	10.5	48.1
1995	March	18.2	2.0	10.1	49.0
1996	January	17.3	2.3	11.7	47.9
	February	16.6	2.3	12.4	44.7
	March	16.4	2.4	12.9	44.8
TASMANIA					
1993	March	80.4	8.7	9.8	48.2
1995	March	85.2	8.6	9.2	50.3
1996	January	84.4	8.5	9.2	49.7
	February	85.2	9.2	9.7	50.4
	March	85.7	8.9	9.4	50.5

¹ For explanation of terms and concepts, refer to *Labour Force, Australia*, ABS catalogue number 6203.0.

² Data in this table are original series, i.e. they are not part of a seasonally adjusted or a trend series. Accordingly, care should be exercised when using this data. New monthly data from each quarter (March, June, September and December) is published two months after the quarter.
(Source: Labour Force Estimates—microfiche tables.)

Northern Statistical Division—Persons



6

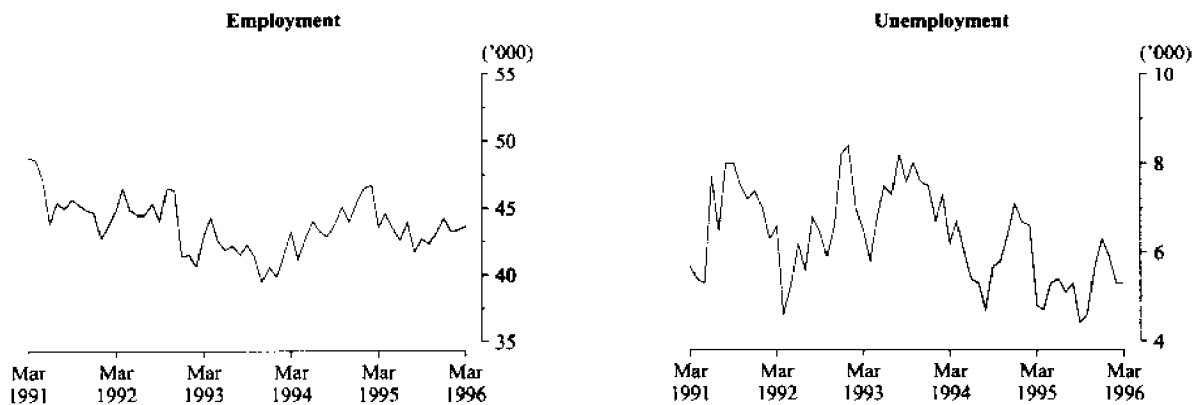
LABOUR FORCE STATUS, BY REGION AND TASMANIA, PERSONS^{1, 2}

Month		Total employed '000	Total unemployed '000	Unemployment rate %	Participation rate %
HOBART AND SOUTHERN STATISTICAL DIVISIONS					
1993	March	91.9	12.7	12.1	58.7
1995	March	101.5	11.8	10.4	62.0
1996	January	98.5	11.5	10.4	60.6
	February	101.1	12.2	10.8	62.3
	March	101.5	10.7	9.6	61.3
NORTHERN STATISTICAL DIVISION					
1993	March	56.5	6.2	9.9	59.6
1995	March	54.8	5.8	9.5	59.0
1996	January	57.5	6.8	10.6	61.8
	February	58.7	6.1	9.4	63.2
	March	56.4	7.4	11.5	62.9
MERSEY-LYELL STATISTICAL DIVISION					
1993	March	43.1	6.5	13.2	62.0
1995	March	43.6	4.8	10.0	59.2
1996	January	43.3	5.9	12.0	59.8
	February	43.4	5.3	11.0	58.0
	March	43.7	5.3	10.9	58.4
TASMANIA					
1993	March	191.4	25.4	11.7	59.7
1995	March	199.9	22.4	10.1	60.6
1996	January	199.4	24.2	10.8	60.8
	February	203.1	23.6	10.4	61.6
	March	201.6	23.4	10.4	61.1

¹ For explanation of terms and concepts, refer to *Labour Force, Australia*, ABS catalogue number 6203.0.

² Data in this table are original series, i.e. they are not part of a seasonally adjusted or a trend series. Accordingly, care should be exercised when using this data. New monthly data from each quarter (March, June, September and December) is published two months after the quarter. (Source: Labour Force Estimates—microfiche tables.)

Mersey-Lyell Statistical Division—Persons



Month	Employed		Unemployed		Labour force	Not in labour force	Civilian population aged 15-19	Unemployment rate	Unemployment population ratio	Participation rate
	Full-time	Total	Looking for full-time work	Total						
	'000	'000	'000	'000	'000	'000	'000	%	%	%
ATTENDING NEITHER SCHOOL NOR A TERTIARY INSTITUTION FULL TIME										
1993 April	7.2	10.0	3.2	3.2	13.2	1.4	14.6	24.3	21.9	90.2
1995 April	6.7	10.2	2.5	2.5	12.7	1.2	13.9	19.7	18.0	91.3
1996 February	7.5	9.7	3.5	3.7	13.3	1.1	14.4	27.4	25.7	92.6
March	7.0	9.8	3.0	3.3	13.1	1.2	14.3	24.8	23.1	91.6
April	8.0	10.8	2.2	2.4	13.2	1.1	14.3	18.3	16.8	92.5
ATTENDING SCHOOL OR A TERTIARY INSTITUTION FULL TIME										
1993 April	..	4.5	0.5	1.7	6.1	14.0	20.1	27.9	8.5	30.3
1995 April	0.2	6.2	0.4	1.3	7.5	12.6	20.1	17.3	6.5	37.3
1996 February	0.6	7.5	0.7	1.4	8.9	10.7	19.6	15.7	7.1	45.4
March	0.1	7.2	0.3	1.5	8.6	11.1	19.8	17.4	7.6	43.4
April	0.1	6.2	0.2	1.4	7.7	12.1	19.8	18.2	7.1	38.9
TOTAL										
1993 April	7.2	14.4	3.7	4.9	19.3	15.4	34.7	25.2	14.1	55.6
1995 April	7.0	16.4	2.9	3.8	20.2	13.8	34.0	18.9	11.2	59.5
1996 February	8.1	17.2	4.2	5.1	22.3	11.8	34.0	22.8	15.0	65.5
March	7.1	17.0	3.3	4.7	21.7	12.3	34.1	21.7	13.8	63.8
April	8.1	17.0	2.4	3.9	20.9	13.2	34.1	18.5	11.4	61.3

¹ Persons aged 15-19 years.

² For explanation of terms and concepts, refer to *Labour Force, Australia*, ABS catalogue number 6203.0. (Source: Labour Force Estimates—unpublished data.)

Occupation	February 1995	February 1996		Proportion of total employed		
	Persons	Males	Females	Persons	February 1995	February 1996
	'000	'000	'000	'000	%	%
Managers and administrators	19.5	13.5	4.3	17.8	10.0	8.8
Farmers and farm managers	7.1	4.5	1.3	5.9	3.7	2.9
Managing supervisors	7.2	4.1	1.8	5.9	3.7	2.9
Other	5.2	4.9	1.2	6.0	2.7	3.0
Professionals	21.9	14.9	10.0	24.9	11.3	12.3
Building and professional engineers	2.2	2.0	—	2.0	1.1	1.0
Health diagnosis and treatment practitioners	3.5	1.4	1.4	2.8	1.8	1.4
School teachers	6.4	2.0	3.0	5.0	3.3	2.5
Business professionals	2.9	3.8	1.9	5.7	1.5	2.8
Other	6.9	5.7	3.7	9.4	3.6	4.6
Para-professionals	13.9	7.1	6.0	13.1	7.2	6.5
Engineering and building associates and technicians	1.7	1.8	—	1.8	0.9	0.9
Registered nurses	4.8	0.4	4.9	5.3	2.5	2.6
Other	7.4	4.9	1.1	6.0	3.8	3.0
Tradespersons	28.3	26.9	2.8	29.7	14.6	14.6
Metal fitting and machining tradespersons	2.2	2.6	—	2.6	1.1	1.3
Electrical and electronics tradespersons	4.5	5.0	—	5.0	2.3	2.5
Building tradespersons	6.9	6.9	0.1	7.0	3.6	3.4
Other	14.7	12.4	2.7	15.1	7.6	7.4
Clerks	30.4	8.8	24.2	33.0	15.6	16.3
Stenographers and typists	4.0	0.3	3.0	3.3	2.1	1.6
Receptionists, telephonists and messengers	4.8	1.1	4.8	5.9	2.5	2.9
Other	21.6	7.4	16.4	23.8	11.1	11.7
Salespersons and personal service workers	33.1	10.9	23.9	34.7	17.0	17.1
Sales representatives	2.3	1.8	1.1	2.8	1.2	1.4
Sales assistants	15.0	5.5	12.4	17.9	7.7	8.8
Other	15.8	3.6	10.4	14.0	8.1	6.9
Plant and machine operators, and drivers	16.0	14.6	1.9	16.5	8.2	8.1
Road and rail transport drivers	7.0	5.2	0.3	5.5	3.6	2.7
Machine operators	4.5	3.5	1.6	5.1	2.3	2.5
Other	4.5	5.9	—	5.9	2.3	2.9
Labourers and related workers	31.2	21.2	12.1	33.3	16.1	16.4
Trades assistants and factory hands	4.8	3.2	1.3	4.5	2.5	2.2
Agricultural labourers and related workers	7.0	5.7	2.3	8.0	3.6	3.9
Cleaners	6.3	1.8	5.4	7.2	3.2	3.5
Construction and mining labourers	3.0	2.9	0.1	3.0	1.5	1.5
Other	10.0	7.6	3.0	10.6	5.1	5.2
Total employed	194.3	117.9	85.2	203.0	100.0	100.0

¹ For explanation of terms and concepts, refer to *Labour Force, Australia*, ABS catalogue number 6203.0. (Source: Labour Force Estimates—unpublished data.)

9

EMPLOYED WAGE AND SALARY EARNERS, SECTOR AND INDUSTRY, TASMANIA¹

Industry	Number of employees ('000) February 1995					Percentage distribution	
	Private and public					February 1993	February 1995
	Private	Public	Males	Females	Persons		
Agriculture, forestry, fishing and hunting	n.a.	0.7	n.a.	n.a.	n.a.	n.a.	n.a.
Mining	1.5	—	1.4	0.1	1.5	1.7	1.1
Manufacturing	20.3	0.1	15.4	4.9	20.4	14.8	15.2
Electricity, gas and water, construction	6.0	2.7	7.6	1.0	8.7	6.8	6.5
Wholesale and retail trade	26.0	—	15.0	11.0	26.1	20.8	19.4
Transport and storage	3.6	1.5	4.1	1.1	5.2	4.1	3.9
Communication	—	2.3	1.8	0.6	2.3	1.6	1.7
Finance, property and business services	10.1	0.9	4.9	6.0	10.9	9.3	8.1
Public administration and defence	—	10.5	6.5	4.0	10.5	7.0	7.8
Community services	14.0	23.4	11.9	25.5	37.4	24.9	27.8
Recreation, personal and other services	10.2	0.6	4.1	6.7	10.8	8.4	8.0
Total all industries	91.8	42.6	73.2	61.2	134.4	100.0	100.0

¹ For explanation of terms and concepts, refer to *Employed Wage and Salary Earners, Australia*, catalogue number 6248.0. (Source: *Employed Wage and Salary Earners*, ABS catalogue number 6248.0.)

10

AVERAGE HOURS WORKED, TASMANIA

Month	Average weekly total hours worked, all employed persons ¹			Average weekly overtime hours ²		Percentage of employees working overtime ²
	Males	Females	Persons	Per employee	Per employee working overtime	
1993						
May	39.0	28.1	34.4	1.1	7.3	15.2
1995						
May	39.6	27.8	34.5	0.9	5.9	14.5
August	40.9	29.6	36.0	0.8	5.7	14.4
November	39.7	26.5	33.9	0.9	6.4	14.7
1996						
February	37.7	25.6	32.7	0.9	6.5	14.1
May	40.1	27.0	34.5	0.9	5.6	16.0

¹ For explanation of terms and concepts, refer to *Labour Force, Australia*, ABS catalogue number 6203.0.

² For explanation of terms and concepts, refer to *Job Vacancies and Overtime, Australia*, ABS catalogue number 6354.0.

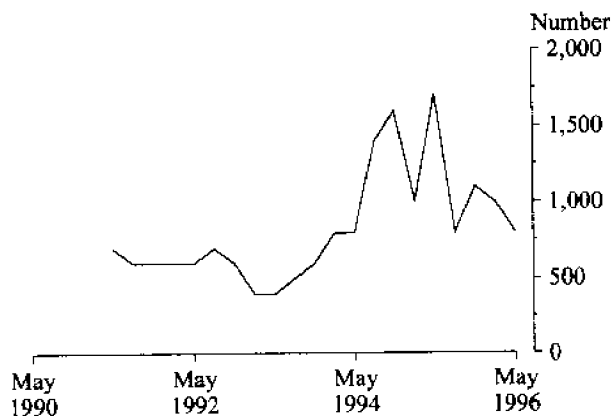
11 JOB VACANCIES, TASMANIA¹

Period	Number	Rate ² %
1993		
May	400	0.3
1995		
May	1 700	1.1
August	800	0.6
November	1 100	0.7
1996		
February	1 000	0.6
May	800	0.5

¹ For explanation of terms and concepts refer to *Job Vacancies and Overtime, Australia*, catalogue number 6354.0.

² Job vacancies are expressed as a percentage of the number of job vacancies divided by the number of employees plus job vacancies.

JOB VACANCIES
Tasmania



12 INDUSTRIAL DISPUTES, TASMANIA¹

Month	Working days lost	Twelve months ending	Working days lost per thousand employees
1995		1995	
March	500	March	34
April	100	April	30
May	200	May	31
June	700	June	35
July	800	July	38
August	100	August	33
September	100	September	30
October	0	October	30
November	100	November	30
December	200	December	22
1996		1996	
January	800	January	24
February	100	February	23
March	0	March	20
Twelve months ended 1996			
March	3 200		

¹ For explanation of terms and concepts, refer to *Industrial Disputes, Australia*, ABS catalogue number 6321.0.

13

AVERAGE WEEKLY EARNINGS OF EMPLOYEES, TASMANIA^{1, 2} (\$)

Quarter	Survey reference period	Males			Females			Persons		
		Full-time adults		All males	Full-time adults		All females	Full-time adults		All employees
		Weekly ordinary time earnings	Weekly total earnings	Weekly total earnings	Weekly ordinary time earnings	Weekly total earnings	Weekly total earnings	Weekly ordinary time earnings	Weekly total earnings	Weekly total earnings
ORIGINAL										
1995										
March	17 February	627.80	668.50	601.70	542.50	554.00	393.50	600.10	631.30	502.70
June	19 May	635.70	678.60	608.80	546.50	556.90	385.60	606.40	638.60	500.70
September	18 August	634.60	675.50	598.70	544.50	555.10	384.80	604.20	634.80	495.60
December	17 November	647.90	687.90	615.50	556.10	569.00	403.20	617.30	648.20	513.80
1996										
March	16 February	652.70	691.40	617.80	561.10	569.30	391.80	622.90	651.70	510.00
TREND										
1995										
March	17 February	631.70	673.00	599.40	542.00	554.20	388.70	601.70	633.30	498.00
June	19 May	633.80	675.10	603.90	546.40	557.40	389.10	604.80	636.40	500.50
September	18 August	638.60	680.50	609.70	549.10	560.30	393.00	609.00	640.70	505.10
December	17 November	644.90	687.80	616.30	552.50	565.10	399.80	614.40	646.70	511.30
1996										
March	16 February	651.10	687.00	611.70	558.20	566.80	390.80	619.80	647.80	507.30

¹ For explanation of terms and concepts, refer to *Average Weekly Earnings, States and Australia* (Catalogue No. 6302.0).

² Prior to September 1995 only the original series appeared in this table.

(Source: *Average Weekly Earnings, States and Australia*, ABS catalogue number 6302.0.)

14

WEEKLY AWARD RATES OF PAY INDEXES, FULL-TIME ADULT EMPLOYEES, TASMANIA¹

(Base: June 1985 = 100.0)

Industry	1993	1995	1996		
	April	April	February	March	April
Mining	137.7	137.7	137.7	137.7	137.7
Manufacturing	145.0	148.0	149.6	149.9	149.9
Electricity, gas and water	130.9	136.1	136.4	136.4	136.4
Construction	141.3	143.7	144.0	144.0	144.0
Wholesale trade	137.2	140.1	143.3	143.3	143.3
Retail trade	136.5	139.7	142.7	142.7	142.7
Transport and storage	137.9	139.1	143.1	143.1	143.1
Communication	135.4	135.4	135.4	135.4	135.4
Finance, property and business services	137.4	137.7	139.5	139.5	139.5
Public administration and defence	135.2	152.2	154.6	155.1	155.1
Community services	140.2	144.3	145.0	145.2	145.2
Recreation, personal and other services	146.0	151.1	153.0	153.0	153.8
Total all industries	139.1	143.6	145.0	145.2	145.2

¹ For explanation of terms and concepts, refer to *Award Rates of Pay Indexes, Australia*, ABS catalogue number 6312.0.

(Source: *Award Rates of Pay Indexes, Australia*, ABS catalogue number 6312.0.)

15

SUMMARY OF ANNUAL MOVEMENTS IN WAGES AND PRICES, TASMANIA

Period	CPI. All groups Hobart	Price index of materials used in house building. All groups, Hobart	Price index of materials used in building other than house building. All groups, Hobart	Average weekly total earnings, full-time adult employees (original series)	Weekly award rates of pay index, full-time adult employees
PERCENTAGE CHANGE FROM PREVIOUS YEAR					
1993					
April	..	0.9	0.8	..	0.6
1995					
April	..	4.6	3.4	..	1.0
1995					
August	..	4.6	3.6	2.4	1.6
September	4.5	4.3	3.5	..	1.7
October	..	3.6	3.7	..	1.6
November	..	3.8	3.2	1.8	1.6
December	4.4	3.4	3.0	..	1.8
1996					
January	..	3.2	2.9	..	1.4
February	..	2.2	2.4	2.3	1.4
March	3.4	1.6	2.0	..	1.2
April	..	1.7	1.4	..	1.2

(Sources:
 Consumer Price Index, ABS catalogue number 6401.0,
 Price Index of Materials Used in House Building, ABS catalogue number 6408.0,
 Price Index of Materials Used in Other than House Building, ABS catalogue number 6407.0,
 Average Weekly Earnings, States and Australia, ABS catalogue number 6302.0,
 Award Rates of Pay Indexes, Australia, ABS catalogue number 6312.0.)

16

HOUSE PRICE INDEX NUMBERS¹, HOBART (Base of each Index: 1989-90 = 100.0)

	Established house price index		Project home price index	
	Index	% change ²	Index	% change ²
1992-93	116.6	4.1	114.1	3.6
1993-94	122.5	5.1	117.7	3.2
1994-95	129.0	5.3	121.3	3.1
1994				
March	123.0	1.3	117.8	0.8
June	126.0	2.4	119.4	1.4
September	128.2	1.7	120.1	0.6
December	128.2	0.0	120.5	0.3
1995				
March	129.4	0.9	121.6	0.9
June	130.1	0.5	123.1	1.2
September	129.2	- 0.7	123.5	0.3
December	129.1	- 0.1	123.5	0.0
1996				
March	129.8	+ 0.5	123.3	- 0.2

¹ Used in calculating the mortgage interest charges component of the Consumer Price Index.
² Percentage change over previous period.
 (Source: House Price Indexes: Eight Capital Cities, ABS catalogue number 6416.0)

17

CONSUMER PRICE INDEX: HOBART AND EIGHT CAPITAL CITIES COMBINED^{1, 2}
(Base of each index; year 1989-90 = 100.0)

Period	Hobart					
	Food	Clothing	Housing ³	Household equipment and operation	Transportation	Tobacco and alcohol
1993						
September	110.2	106.9	94.9	111.3	111.6	132.1
December	111.7	106.8	93.4	111.8	112.3	133.4
1994						
March	112.6	106.4	93.3	112.2	111.9	134.3
June	112.2	106.4	94.2	112.4	112.8	134.8
September	113.9	106.6	94.8	112.8	113.9	137.2
December	113.3	105.3	97.6	113.9	115.0	139.1
1995						
March	115.4	105.0	102.7	114.9	115.1	140.3
June	116.1	106.1	104.5	115.4	117.2	143.1
September	117.3	105.9	106.0	116.5	119.4	144.3
December	117.1	105.6	106.5	117.5	120.1	145.9
1996						
March	118.1	106.3	107.2	117.8	119.0	150.3

17

CONSUMER PRICE INDEX: HOBART AND EIGHT CAPITAL CITIES COMBINED^{1, 2} (continued)
(Base of each index; year 1989-90 = 100.0)

Period	Hobart				Weighted average of eight capital cities ³	
	Health and personal care	Recreation and education	All groups Index	% change over previous period	Index	% change over previous period
1993						
September	134.5	108.7	111.0	+ 1.5	109.8	+ 0.5
December	134.5	111.0	111.6	+ 0.5	110.0	+ 0.2
1994						
March	137.5	109.7	111.9	+ 0.3	110.4	+ 0.4
June	137.9	111.3	112.4	+ 0.4	111.2	+ 0.7
September	138.7	111.7	113.3	+ 0.8	111.9	+ 0.6
December	138.7	113.0	114.2	+ 0.8	112.8	+ 0.8
1995						
March	140.4	115.4	116.1	+ 1.7	114.7	+ 1.7
June	141.0	114.0	117.1	+ 0.9	116.2	+ 1.3
September	146.7	113.3	118.4	+ 1.1	117.6	+ 1.2
December	146.9	115.8	119.2	+ 0.7	118.5	+ 0.8
1996						
March	149.7	117.1	120.1	+ 0.8	119.0	+ 0.4

¹ Further information on construction of CPI indexes is contained in the bulletin *The Australian Consumer Price Index Concepts, Sources and Methods* (Catalogue No. 6461.0).

² The CPI is now published on a reference base of 1989-90 = 100.0.

³ Series from and including March 1989 has been affected by the change in treatment of mortgage interest charges. (Source: *Consumer Price Index*, ABS catalogue number 6401.0.)

18

PRICE INDEX OF MATERIALS USED IN BUILDING OTHER THAN HOUSE BUILDING: HOBART
(Base year: 1989-90 = 100.0)

Index numbers for selected major building materials

<i>Period</i>	<i>Structural timber</i>	<i>Clay bricks</i>	<i>Ready mixed concrete</i>	<i>Precast concrete products</i>	<i>Steel decking, cladding etc.</i>	<i>Structural steel</i>
1995						
February	124.1	118.0	117.1	122.5	108.3	116.0
March	125.6	118.0	116.9	122.5	107.5	116.0
April	125.8	118.0	117.0	122.5	107.1	116.0
May	125.8	118.0	118.3	122.5	107.5	117.0
June	125.8	118.1	118.0	122.5	107.5	119.6
July	124.9	118.1	117.1	130.3	110.7	119.6
August	122.0	118.1	117.0	130.3	110.7	119.6
September	122.1	123.2	116.7	130.3	111.0	119.6
October	119.7	123.2	117.2	130.3	111.0	120.9
November	120.1	123.2	116.3	130.3	111.0	120.9
December	120.1	123.3	114.5	130.4	111.0	121.9
1996						
January	120.1	123.3	116.9	130.4	111.0	121.9
February p	116.9	123.3	115.9	128.4	112.1	121.9
March p	116.9	123.7	113.2	128.4	112.3	121.9
April p	116.9	123.7	113.2	128.4	112.3	122.7

18

PRICE INDEX OF MATERIALS USED IN BUILDING OTHER THAN HOUSE BUILDING: HOBART—*continued*
(Base year: 1989-90 = 100.0)

Index numbers for selected major building materials

<i>Period</i>	<i>Reinforcing steel bar, fabric and mesh</i>	<i>Aluminium windows</i>	<i>Fabricated steel products</i>	<i>Builders' hardware</i>	<i>Sand & aggregate</i>	<i>Paint & other coatings</i>	<i>Non-ferrous pipes & fittings</i>
1995							
February	106.0	101.8	107.1	115.5	133.1	116.9	183.3
March	105.9	103.3	107.6	114.2	133.1	114.7	183.3
April	105.9	104.5	107.6	114.6	133.1	114.7	183.2
May	105.9	104.5	107.6	114.6	133.1	115.5	186.0
June	105.7	104.5	107.6	118.1	133.1	114.9	183.3
July	107.0	104.5	107.6	118.9	133.1	116.3	184.9
August	107.4	104.5	107.7	118.9	133.1	119.5	184.4
September	109.2	104.5	107.6	120.4	133.1	118.9	169.0
October	109.2	104.5	108.3	120.7	133.1	118.9	169.1
November	109.2	104.5	108.3	119.2	133.1	118.7	169.1
December	109.2	104.5	108.3	117.7	133.1	121.4	169.1
1996							
January	109.2	104.5	108.3	118.3	133.1	121.5	169.1
February p	109.2	104.5	108.1	117.7	133.1	121.5	169.4
March p	109.2	104.7	108.3	117.7	133.1	121.5	169.4
April p	109.2	104.4	111.5	117.3	133.1	118.1	172.8

(Source: Price Index of Materials Used in Other than House Building, ABS catalogue number 6407.0.)

18

PRICE INDEX OF MATERIALS USED IN BUILDING OTHER THAN HOUSE BUILDING: HOBART—*continued*
(Base year: 1989-90 = 100.0)

<i>Index numbers for special combinations of building materials</i>						
<i>Period</i>	<i>All electrical materials</i>		<i>All mechanical services</i>		<i>All plumbing materials</i>	
	<i>Index</i>	<i>% change over previous period</i>	<i>Index</i>	<i>% change over previous period</i>	<i>Index</i>	<i>% change over previous period</i>
1995						
February	112.8	+ 1.9	113.4	+ 0.6	128.4	+ 0.7
March	113.1	+ 0.3	113.6	+ 0.2	128.3	- 0.1
April	114.7	+ 1.4	114.4	+ 0.7	128.4	+ 0.1
May	115.2	+ 0.4	113.9	- 0.4	128.9	+ 0.4
June	116.7	+ 1.3	114.0	+ 0.1	129.4	+ 0.4
July	117.9	+ 1.0	114.1	+ 0.1	129.7	+ 0.2
August	118.9	+ 0.8	114.0	- 0.1	129.9	+ 0.2
September	118.9	0.0	113.3	- 0.6	126.6	- 2.5
October	118.7	- 0.2	115.2	+ 1.7	127.4	+ 0.6
November	118.7	0.0	114.7	- 0.4	127.4	0.0
December	118.5	- 0.2	114.8	+ 0.1	127.5	+ 0.1
1996						
January	117.8	- 0.6	114.8	0.0	127.5	0.0
February p	117.8	0.0	115.4	+ 0.5	127.6	+ 0.1
March p	118.6	+ 0.7	115.7	+ 0.3	127.6	0.0
April p	118.3	- 0.3	116.1	+ 0.3	126.6	- 0.8

18

PRICE INDEX OF MATERIALS USED IN BUILDING OTHER THAN HOUSE BUILDING: HOBART—*continued*
(Base year: 1989-90 = 100.0)

<i>Index numbers for special combinations of building materials</i>					
<i>Period</i>	<i>All groups excluding electrical materials and mechanical services</i>			<i>All groups</i>	
	<i>Index</i>	<i>% change over previous period</i>		<i>Index</i>	<i>% change over previous period</i>
1995					
February	112.7	+ 0.3		112.5	+ 0.4
March	113.0	+ 0.3		112.8	+ 0.3
April	113.6	+ 0.5		113.5	+ 0.6
May	114.1	+ 0.4		113.8	+ 0.3
June	114.6	+ 0.4		114.2	+ 0.4
July	115.1	+ 0.4		114.7	+ 0.4
August	115.3	+ 0.2		114.9	+ 0.2
September	115.5	+ 0.2		114.9	0.0
October	115.8	+ 0.3		115.5	+ 0.5
November	115.7	- 0.1		115.3	- 0.2
December	115.5	- 0.2		115.1	- 0.2
1996					
January	115.9	+ 0.3		115.3	+ 0.2
February p	115.6	- 0.3		115.2	- 0.1
March p	115.3	- 0.3		115.1	- 0.1
April p	115.2	- 0.1		115.1	0.0

(Source: Price Index of Materials Used In Other than House Building, ABS catalogue number 6407.0.)

19 MISCELLANEOUS INDICATORS OF PRODUCTION, TASMANIA

Year or month	Dairy products ¹			Staff-hours worked ²	
	Whole milk ⁴	Factory butter ⁵	Factory cheese	Textile manufacturing ⁶	Vegetable preserving
	million litres	tonnes	tonnes	'000	'000
1992-93	412.9	6 287	20 043	1 740	1 915
1993-94	447.3	7 846	22 461	1 575	2 002
1994-95	436.5	8 105	20 529	1 527	1 838
1993					
March	36.8	746	1 401	164	162
1995					
March	33.9	r 595	r 1 605	142	195
1996					
January	56.4	1 137	r 2 540	72	130
February	48.7	1 175	1 912	116	163
March	45.7	936	1 783	122	178

19 MISCELLANEOUS INDICATORS OF PRODUCTION, TASMANIA (continued)

Year or month	Newsprint ⁷	Refined zinc	Metal. refin. index ³	Electricity	Gas
	'000 tonnes	'000 tonnes		million kW.h	'000 MJ
1992-93	228.4	212.0	109.4	8 864	61 432
1993-94	208.9	193.8	105.5	8 855	55 767
1994-95	222.7	189.8	98.3	8 688	51 933
1993					
March	17.4	15.4	103.7	704	4 320
1995					
March	21.6	14.0	94.8	707	3 830
1996					
January	22.4	16.5	102.2	685	2 326
February	19.9	17.4	99.3	668	2 265
March	20.8	17.6	102.6	724	2 425

¹ Source: Australian Dairy Corporation.

² Changing productivity per staff-hour makes these indicators unsatisfactory for long-term comparisons.

³ *Metallurgical refining index* (Base: 1979-80 = 100.0) Output from selected establishments covering the smelting and refining of ferro-alloys, zinc and aluminium. The weighting pattern is based on the establishments' value added as derived from the 1979-80 Manufacturing Census. For multi-product establishments, value added was apportioned to products on the basis of gross receipts from each product.

⁴ Includes the whole milk equivalent of farm cream intake.

⁵ Includes butter equivalent of butter oil.

⁶ Includes spinning, weaving and carpet making. Reported by establishments which manufacture textiles only, or manufacture clothing and textiles in the one plant.

⁷ Excludes production of directory newsprint and high grade specialty paper.

(Source: ABS unpublished data.)

20

LIVESTOCK SLAUGHTERING, TASMANIA: NUMBERS ('000)

Year or month	Cattle			Sheep	Lambs	Pigs
	Bulls, bullocks and steers	Cows and heifers	Calves			
1992-93	99.0	90.4	32.7	473.4	456.5	92.5
1993-94	101.8	85.2	23.2	526.1	437.8	95.8
1994-95	111.0	96.9	29.2	569.3	477.2	92.9
1994						
April	9.5	8.3	0.2	41.3	37.6	7.5
1995						
April	9.5	9.8	1.0	46.3	41.1	7.2
May	10.9	10.3	1.2	43.6	41.1	8.2
June	10.5	10.3	0.9	42.8	44.8	8.6
July	p 8.1	5.8	1.1	18.6	25.6	6.5
August	p 5.0	4.8	14.0	18.2	27.3	7.3
September	p 5.6	4.4	16.6	18.0	29.0	7.1
October	p 7.0	6.3	5.3	25.5	28.6	6.1
November	p 8.8	7.1	0.8	36.5	34.9	6.9
December	p 9.5	7.6	0.5	44.8	40.5	8.4
1996						
January	p 11.2	6.8	0.1	43.6	38.9	6.1
February	p 8.6	7.8	0.1	39.8	40.4	6.3
March	p 9.0	8.9	0.2	40.6	41.2	7.2
April	p 6.6	6.4	0.9	31.4	30.7	6.0

(Source: *Livestock Products, Australia*, ABS catalogue number 7215.0.)

21

LIVESTOCK SLAUGHTERING, TASMANIA: SEASONALLY ADJUSTED AND TREND SERIES¹

Month	Seasonally adjusted			Trend series ²		
	Cattle and calves	Sheep and lambs	Pigs	Cattle and calves	Sheep and lambs	Pigs
1994						
April	15 333	68 043	7 767	15 315	82 165	7 881
1995						
April	22 430	77 733	7 706	22 533	79 080	7 824
May	21 931	79 573	8 072	22 023	76 323	7 718
June	24 231	79 542	7 402	21 066	73 182	7 555
July	17 108	61 018	6 891	20 129	70 083	7 345
August	18 875	68 669	7 418	19 602	68 228	7 149
September	19 047	68 094	7 287	19 652	68 207	7 006
October	19 681	71 035	6 803	20 164	69 607	6 922
November	20 691	69 299	6 524	20 609	71 099	6 897
December	24 723	77 577	6 761	20 624	71 424	6 897
1996						
January	18 563	72 699	7 354	19 995	69 861	6 891
February	18 684	65 606	6 862	18 999	67 158	6 878
March	17 537	63 666	7 006	17 929	64 075	6 846
April	15 710	54 941	6 437	16 876	60 710	6 816

¹ This data has been revised to take account of the latest seasonal factor.

² Trend estimates may be revised as data for later months become available.

(Source: unpublished data.)

22

MEAT PRODUCTION, TASMANIA (tonnes)

Year or month	Meat (carcass weight)					Total
	Beef	Veal	Mutton	Lamb	Pigmeat ¹	
1992-93	44 925	692	8 949	7 456	5 749	67 770
1993-94	47 458	515	9 992	7 047	6 019	71 031
1994-95	49 827	1 059	11 230	8 412	5 982	76 511
1994						
April	4 537	5	784	616	477	6 419
1995						
April	4 370	36	884	689	464	6 444
May	4 881	39	895	761	532	7 108
June	4 864	38	877	829	553	7 161
July	3 569	30	389	481	426	4 895
August	2 312	353	378	514	475	4 031
September	2 354	418	372	546	470	4 161
October	3 151	141	529	540	399	4 761
November	3 846	24	797	659	449	5 775
December	4 145	17	983	764	546	6 456
1996						
January	4 467	4	937	733	397	6 538
February	4 122	5	852	761	410	6 150
March	4 175	9	860	777	470	6 290
April	3 012	26	657	579	397	4 671

¹ Includes pork used for production of bacon and ham.

(Source: *Livestock Products, Australia*, ABS catalogue number 7215.0.)

23

PRINCIPAL MINERAL CONCENTRATES PRODUCED, TASMANIA ('000 tonnes)

Year or quarter	Concentrate							
	Copper	Iron (pellets)	Iron pyrite	Lead	Lead-copper	Lead-zinc	Tin	Zinc
1992-93	107.6	1 458.9	94.5	90.7	1.2	69.5	12.1	454.3
1993-94	128.1	1 565.9	87.9	93.4	0.0	57.5	13.4	316.5
1994-95	59.4	1 483.8	22.9	97.4	0.0	45.3	14.3	350.6
1994								
December	23.3	369.9	0.0	23.9	0.0	8.9	3.7	83.7
1995								
March	3.4	301.3	0.0	18.4	0.0	9.6	3.2	90.5
June	3.9	415.8	0.0	26.5	0.0	15.8	4.2	86.2
September	4.5	463.0	0.0	21.9	0.0	11.2	4.1	93.6
December	4.4	416.0	0.0	29.7	0.0	6.8	4.1	98.1
1996								
March	3.3	326.9	0.0	24.1	0.0	11.4	3.4	84.8

(Source: *Tasmania—Development and Resources*)

24

SAWMILLS AND PLYWOOD MILLS: LOGS DELIVERED AND TIMBER PRODUCED, TASMANIA ('000 m³)

Year or quarter	Tasmanian-grown logs delivered					Sawn, peeled and sliced timber produced ¹				
	Hardwoods		Softwoods			Hardwoods		Softwoods		
	Eucalypts	Other hardwoods ²	Plantation ³	Natives ⁴	Total	Eucalypts	Other hardwoods ²	Plantation ³	Natives ⁴	Total
1992-93	554.5	13.0	312.8	2.8	883.2	188.9	2.9	131.6	0.7	324.1
1993-94	584.3	15.3	299.2	1.5	900.4	203.5	3.1	141.0	0.5	348.0
1994-95	653.1	12.6	304.9	2.8	973.4	212.5	4.3	142.7	0.6	360.1
1994										
March	140.0	5.0	77.4	0.4	222.8	46.5	0.6	38.1	0.1	85.3
June	149.4	4.5	76.1	0.4	230.4	52.1	1.1	34.1	0.2	87.5
September	170.2	3.8	76.3	0.6	250.9	59.5	1.2	35.1	0.1	95.9
December	163.0	3.7	68.8	0.3	235.8	55.2	1.0	36.1	0.2	92.5
1995										
March	132.3	3.0	82.5	1.1	218.9	44.5	1.0	37.0	0.1	82.6
June	187.6	2.1	77.4	0.7	267.8	53.4	1.1	34.6	0.1	89.2
September	182.6	1.7	79.6	0.2	264.2	54.4	1.3	35.8	0.1	91.6
December	137.8	1.4	69.9	0.2	209.4	48.1	1.0	35.8	0.2	85.2
1996										
March	135.4	6.4	97.7	0.3	239.8	40.7	0.9	40.9	0.1	82.7

¹ Includes plywood, veneer and sliced timber production converted to an equivalent cubic measurement.
² Includes blackwood, myrtle, sassafras etc.
³ Radiata pine.
⁴ Includes Huon pine, celery top pine and King William pine.
(Source: ABS unpublished data.)

25

CHIPPING AND GRINDING OF WOOD¹, TASMANIA

Year or quarter	Producing locations (no.) ²	Materials used ('000 m ³) ³			Chipped and ground wood production ('000 tonnes green weight)
		Logs delivered ⁴	Sawmill offcuts		
1992-93	31	3 350.6	295.8	3 565.8	
1993-94	30	3 448.8	339.8	3 726.1	
1994-95	31	4 064.1	394.2	4 343.1	
1994					
March	31	818.3	71.3	868.3	
June	30	841.6	83.3	944.0	
September	30	939.8	86.3	991.3	
December	31	1 065.8	92.0	1 115.4	
1995					
March	31	1 090.6	95.7	1 177.1	
June	31	967.9	120.1	1 059.3	
September	31	935.6	118.2	1 044.1	
December	31	932.1	104.6	939.9	
1996					
March	32	842.6	109.8	958.0	

¹ Both hardwoods and softwoods, separate details are not available.
² Capable of producing at end of year or actually producing during quarter.
³ Data reported by weight, converted to cubic measure by the factor 0.95 m³ per tonne.
⁴ Includes log equivalent of limbwood and billets.
(Source: ABS unpublished data.)

26

LOGS DELIVERED FOR MILLING OR CHIPPING, TASMANIA ('000 m³)

Year or quarter	Sawmilling and plywood milling			Chipping and grinding ¹			Total		
	Crown land ²	Private land	Total	Crown land ²	Private land	Total	Crown land ²	Private land	Total
1992-93	698.9	184.3	883.2	1 753.4	1 597.2	3 350.6	2 452.3	1 781.5	4 233.7
1993-94	696.5	203.9	900.4	1 697.0	1 751.8	3 448.8	2 393.5	1 955.7	4 349.2
1994-95	780.3	193.2	973.4	1 966.8	2 097.3	4 064.1	2 747.1	2 290.4	5 037.6
1994									
March	170.9	51.9	222.8	393.7	424.6	818.3	564.6	476.5	1 041.1
June	182.2	48.3	230.4	397.7	443.9	841.6	579.9	492.2	1 072.0
September	199.8	51.1	250.9	481.0	458.8	939.8	680.8	509.9	1 190.7
December	180.6	55.2	235.8	467.9	597.8	1 065.8	648.5	653.0	1 301.6
1995									
March	184.7	34.2	218.9	480.3	610.3	1 090.6	665.0	644.5	1 309.5
June	215.2	52.7	267.8	537.6	430.3	967.9	752.8	483.0	1 235.8
September	212.5	51.7	264.2	438.2	497.4	935.6	650.6	549.2	1 199.8
December	163.9	45.4	209.4	388.3	543.8	932.1	552.2	589.3	1 141.5
1996									
March	200.8	39.0	240.0	405.3	437.3	842.6	606.1	476.3	1 082.4

¹ Logs used are generally below sawmilling standard; includes log equivalent of limbwood and billets.

² Comprises all areas (including concession areas) from which royalties are payable to Forestry Tasmania.
(Source: ABS unpublished data.)

27

BUILDING APPROVALS, TASMANIA

<i>New residential building</i>									
<i>Year or month</i>	<i>No. of houses</i>	<i>No. of other residential buildings³</i>	<i>Total no. of dwelling units</i>	<i>Value of total dwelling units</i>	<i>Conversions etc.</i>	<i>Value of alterations and additions¹ to residential building</i>	<i>Value of non-residential building²</i>		<i>Total value of building</i>
							<i>Private</i>	<i>Total</i>	
				<i>\$'000</i>	<i>no.</i>	<i>\$'000</i>	<i>\$'000</i>	<i>\$'000</i>	<i>\$'000</i>
1992-93	2 956	1 138	4 094	275 262	n.a.	33 050	62 416	103 107	411 419
1993-94	3 113	1 034	4 147	301 963	11	39 522	81 251	145 922	487 407
1994-95	2 576	596	3 172	244 623	14	39 963	117 984	161 567	446 152
1993									
April	286	58	344	24 859	—	2 996	4 366	9 094	36 949
1995									
April	170	29	199	16 776	1	2 937	8 039	15 677	35 390
1996									
January	135	92	227	23 749	1	3 199	18 028	42 277	69 225
February	172	25	197	16 763	—	3 839	7 054	13 327	33 929
March	138	27	165	13 759	—	2 846	9 481	12 509	29 113
April	141	104	245	22 811	1	3 669	9 953	11 840	38 321

¹ Valued at \$10,000 and over.

² Comprises non-residential building (new plus alterations and additions) valued at \$50,000 and over.

³ New individual dwelling units (e.g. flats, home units and villa units).

(Source: *Building Approvals, Tasmania*, ABS catalogue number 8731.6.)

28

DWELLING COMMENCEMENTS, TASMANIA

<i>New residential building</i>									
<i>No. of houses</i>									
<i>Year or month</i>	<i>Double brick</i>	<i>Brick veneer</i>	<i>Fibre cement</i>	<i>Timber</i>	<i>Other and not stated</i>	<i>Total houses</i>	<i>No. of other residential buildings¹</i>	<i>Total no. of dwelling units</i>	
1992-93	277	1 933	103	447	65	2 825	1 129	3 954	
1993-94	306	2 120	103	441	79	3 049	973	4 022	
1994-95	132	1 816	93	402	62	2 505	645	3 150	
1993									
March	32	203	7	43	8	293	112	405	
1995									
March	6	167	5	54	8	240	52	292	
December	13	101	4	22	7	147	7	154	
1996									
January	18	104	7	18	9	156	54	210	
February	13	98	11	21	12	155	11	166	
March	25	78	6	20	14	143	14	157	

¹ New individual dwelling units (e.g. flats, home units and villa units).

(Source: *Dwelling Unit Commencements Reported by Approving Authorities, Tasmania*, ABS catalogue number 8741.6.)

29 BANKING STATISTICS, TASMANIA^{1, 2} (\$m)

Month	Deposits				
	Current bearing interest	Current - not bearing interest	Fixed	Investment savings accounts	Statement savings accounts
1995					
April	540	295	1 590	569	186
May	544	281	1 599	560	186
June	545	285	1 549	553	186
July	568	275	1 572	552	188
August	580	270	1 594	550	189
September	599	263	1 673	549	192
October	605	258	1 690	547	189
November	620	270	1 672	546	190
December	628	279	1 659	546	191
1996					
January	646	272	1 646	546	190
February	665	265	1 639	544	174
March	690	271	1 657	550	160
April	689	270	1 693	547	160

29 BANKING STATISTICS, TASMANIA^{1, 2} (\$m)—continued

Month	Deposits — continued			Loans ³
	Passbook/School savings accounts	Other	Total	
1995				
April	204	146	3 531	4 115
May	203	132	3 505	4 131
June	199	132	3 449	4 166
July	198	128	3 480	4 231
August	194	130	3 507	4 276
September	191	131	3 596	4 304
October	189	132	3 609	4 298
November	185	129	3 612	4 349
December	177	127	3 607	4 374
1996				
January	175	127	3 601	4 372
February	171	127	3 585	4 422
March	171	128	3 626	4 450
April	168	130	3 657	4 471

¹ Due to changes to the *Banking Act 1959* in December 1989, which removed the distinction between trading and savings banks, figures previously published in this table are no longer comparable with those shown above.

² Details are the averages of weekly figures for each month. The figures are derived from returns submitted by banks authorised under the *Banking Act* together with similar returns voluntarily submitted by the State banks; they exclude the Reserve Bank.

³ Excludes non-resident loans.

(Source: Reserve Bank of Australia.)

30 PRIVATE NEW CAPITAL EXPENDITURE BY TYPE OF ASSET, TASMANIA¹ (\$m)

Year or quarter	New buildings and structures	Equipment, plant, and machinery	Total
1992-93	104	342	446
1993-94	100	341	441
1994-95	133	503	636
1995			
March	46	129	175
June	41	170	211
September	51	95	146
December	r 47	r 92	r 139
1996			
March	44	96	140

¹ Estimates based on a sample survey and therefore subject to sampling variability. Covers selected industries only—mining, manufacturing, finance, property and other selected industries.

(Source: State Estimates of Private New Capital Expenditure, ABS catalogue number 5646.0.)

31 PASSENGER ARRIVALS AND DEPARTURES, TASMANIA¹

Period	Arrivals				Total departures ²	Cruise ships	
	By air					Arrivals	Departures
	Interstate	Inter-national	By sea	Total			
1992	652 092	4 428	114 969	771 489	761 109	4 608	4 608
1993	694 244	5 144	115 381	814 769	814 835	2 033	2 033
1994	745 508	4 166	128 644	878 318	880 936	6 592	6 592
1995	811 784	3 982	116 869	932 635	931 278	6 199	6 199
1995							
March	68 790	351	13 087	82 228	86 348	659	659
1996							
January	83 246	384	12 756	96 386	114 160	2 806	2 806
February	74 239	377	10 926	85 542	79 106	1 630	1 630
March	71 838	503	10 998	83 359	89 056	—	—

¹ The following persons are not included in these statistics: passengers under three years of age accompanied by an adult; passengers travelling on chartered flights with minor carriers; passengers travelling on private or VIP flights; and passengers from or departing for overseas other than direct flights to New Zealand.

² The proportion of departing passengers who were visitors was shown to be about 58% in the 1981 Tasmanian Visitor Survey, 55% in the 1984 Tasmanian Visitor Survey, about 53% in the 1986 Tasmanian Visitor Survey, almost 65% in the 1990 Tasmanian Visitor Survey, and almost 60% in the 1994 survey.

(Source: Department of Tourism)

32 TOTAL PASSENGER ARRIVALS BY AIR AND SEA INTO TASMANIA

Period	Original	Seasonally adjusted ¹	Trend
1995			
March	82 228	76 584	76 588
1996			
January	96 386	75 517	77 209
February	85 542	75 860	76 761
March	83 359	78 475	76 683

¹ There is an annual recalculation of seasonal adjustment factors to include the most recent year's arrivals. This occurs at the end of each financial year and may cause revisions to previously published seasonally adjusted and trend figures. A full time series of seasonally adjusted and trend series from January 1971 is available on request, telephone (002) 20 5870.

(Source: Department of Tourism. ABS unpublished data.)

HOTELS, MOTELS, ETC. WITH FACILITIES

Period	Establishments No.	Guest rooms No.	Room nights		Room occupancy rate %	Takings from accommodation \$'000
			Seasonally adjusted No.	Trend estimates No.		
March quarter						
1994	178	5 334	n.a.	n.a.	66.2	22 812
1995	177	5 380			68.2	24 963
1996	180	5 520			67.1	26 267
1994						
January	n.a.	n.a.	83 197	85 334	60.8	7 294
February	n.a.	n.a.	85 954	86 418	65.7	7 001
March	178	5 334	85 705	87 510	72.2	8 518
1995						
January	n.a.	n.a.	82 686	86 788	61.8	7 971
February	n.a.	n.a.	90 988	86 814	69.2	7 713
March	177	5 380	89 351	87 101	73.7	9 279
1996						
January	n.a.	n.a.	86 748	90 308	62.6	8 575
February	n.a.	n.a.	93 094	89 928	69.1	8 514
March	180	5 520	87 466	89 609	69.8	9 178

HOLIDAY UNITS

Period	Establishments No.	Units No.	Unit nights		Unit occupancy rate %	Takings from accommodation \$'000
			Seasonally adjusted No.	Trend estimates No.		
March quarter						
1994	53	797	n.a.	n.a.	70.1	3 725
1995	55	867			72.7	4 391
1996	54	830			64.2	3 835
1994						
January	n.a.	n.a.	12 660	12 704	75.7	1 407
February	n.a.	n.a.	12 736	13 025	65.5	1 087
March	53	797	13 332	13 317	68.6	1 231
1995						
January	n.a.	n.a.	13 824	14 279	75.9	1 649
February	n.a.	n.a.	14 743	14 232	70.1	1 334
March	55	867	15 177	13 921	71.9	1 408
1996						
January	n.a.	n.a.	12 023	12 733	69.0	1 477
February	n.a.	n.a.	12 396	12 624	61.8	1 174
March	54	830	12 487	12 451	61.8	1 184

CARAVAN PARKS

Period	Establishments No.	Sites and cabins ¹ No.	Site occupancy rate %	Takings from accommodation \$'000
1994	70	6 715	36.4	2 595
1995	75	6 834	39.2	2 886
1996	72	6 524	42.1	3 126
1994				
January	n.a.	n.a.	42.7	1 050
February	n.a.	n.a.	35.1	792
March	70	6 715	31.4	753
1995				
January	n.a.	n.a.	45.5	1 156
February	n.a.	n.a.	38.1	887
March	75	6 834	34.0	844
1996				
January	n.a.	n.a.	48.5	1 249
February	n.a.	n.a.	40.4	1 000
March	72	6 524	37.3	878

¹At end of quarter.

(Source: Tourist Accommodation, ABS catalogue number 8635.6.)

34 REGISTRATIONS OF NEW MOTOR VEHICLES, TASMANIA¹

Year or month	Passenger vehicles	Other vehicles ²	Total (excl. motor cycles)	Vehicles registered by vehicle rental businesses ³	Motor cycles
1993	10 019	2 478	12 497	1 507	440
1994	10 543	2 837	13 380	1 708	376
1995	10 919	2 874	13 793	1 952	393
1994					
April	594	217	811	6	29
1995					
April	593	226	819	1	24
May	973	383	1 356	6	30
June	846	368	1 214	16	25
July	772	257	1 029	65	21
August	1 061	208	1 269	245	28
September	1 076	184	1 260	373	36
October	1 072	208	1 280	301	35
November	702	151	853	62	32
December	1 489	245	1 734	842	37
1996					
January	670	203	873	5	36
February	777	212	989	62	48
March	764	197	961	3	33
April p	659	159	818	—	30

¹ Includes State and Commonwealth Government-owned motor vehicles other than those belonging to the defence services. Excludes tractors, plant and equipment, caravans and trailers.

² Comprises utilities, panel vans, rigid and articulated trucks and other truck-type vehicles (i.e. motor vehicles designed for purposes other than freight carrying, e.g. campervans, tow trucks, ambulances and hearses) and buses.

³ These figures are included in previous columns.

(Source: *Motor Vehicle Registrations Australia*, ABS catalogue number 9301.0. ABS unpublished data.)

35 TURNOVER OF RETAIL ESTABLISHMENTS AT CURRENT PRICES, TASMANIA¹

Period	Original \$m	Trend estimates ²	
		\$m	% change from corresponding month of previous year
1994			
April	220.6	231.5	6.5
1995			
April	229.7	236.1	2.0
May	229.0	237.1	2.4
June	226.6	237.3	2.5
July	225.3	237.1	2.5
August	230.5	236.9	2.6
September	222.3	237.4	3.1
October	236.0	238.6	4.1
November	251.6	240.4	5.1
December	320.5	242.4	5.8
1996			
January	240.5	244.2	6.1
February	233.5	245.4	5.8
March	241.3	246.4	5.2
April	237.8	246.7	4.5

¹ Survey has been re-designed—see Information Paper (8511.0).

² Trend estimates revised each month.

(Source: *Retail Trade, Australia*, ABS catalogue number 8501.0.)

	NSW	Vic.	Qld	SA	WA	Tas.	Aust. ¹
Population							
Estimated resident population, December 1995 ('000) p	6 155.0	4 521.8	3 316.5	1 475.9	1 747.0	473.2	18 173.6
Proportion of Australian population, December 1995 (%) p	33.9	24.9	18.2	8.1	9.6	2.6	100.0
Population growth rate, 12 months to December 1995 (%) p	1.3	0.8	2.6	0.3	1.9	0.1	1.3
Labour Force							
Employment growth, 12 months to May 1996 (trend series) (%)							
Males	0.7	1.1	3.0	0.1	0.2	1.8	1.1
Females	1.6	1.0	- 1.9	1.5	- 0.3	- 0.8	0.5
Persons	1.1	1.0	0.9	0.7	0.0	0.6	0.9
Unemployment rate (trend series), May 1996 (%)	8.2	8.8	9.1	9.6	7.5	10.4	8.6
Unemployment growth, 12 months to May 1996 (trend series) (%)	5.8	1.4	4.4	- 2.8	2.6	5.4	3.6
Participation rate (trend series), May 1996 (%)	62.2	63.5	64.3	62.0	65.7	61.0	63.5
Average weekly overtime worked per employee, May 1996 (hours)	1.2	1.2	1.2	1.1	1.1	0.9	1.1
Job vacancy rate, May 1996 (%)	1.1	0.7	0.6	0.5	0.9	0.5	0.8
Working days lost through industrial disputes, 12 months to March 1996 (days per '000 employees)	76	71	114	39	168	20	85
Wages and Prices							
Average weekly total earnings, full-time adult employees (trend series) February 1996 (\$)							
Males	809.3	754.3	694.4	704.4	802.6	687.0	764.6
Females	626.9	597.6	565.7	567.1	584.7	566.8	600.5
Persons	742.9	702.2	647.5	660.1	724.7	647.8	706.6
Average weekly total earnings, full-time adult employees, growth rate, 12 months to February 1996 (%)	5.3	3.8	1.9	1.7	6.1	2.3	4.1
Consumer price index, all groups, annual growth to March quarter 1996 (%)	4.7	2.9	3.3	3.2	3.6	3.4	3.7
Building							
% change in the number of new residential dwelling units approved in 12 months ended April 1996, over the same period previous year	- 22.3	- 21.2	- 37.2	- 42.3	- 30.5	- 21.9	- 28.7
Finance and Retail Trade							
% change in private new capital expenditure, 12 months ended March 1996, over the same period previous year	4.8	14.3	12.3	- 12.6	11.4	12.5	9.4
% change in trend estimates turnover of retail establishments, April 1996 (change from corresponding month of the previous year)	10.8	4.7	4.3	1.8	8.8	4.5	7.0
Transport							
% change in number of new motor vehicles (excluding motorcycles) registered 12 months ended April 1996, over the same period previous year	- 1.8	5.9	2.3	5.8	2.2	- 0.5	2.1
Agriculture							
% change in the number of livestock slaughtered 12 months ended April 1996 over the same period previous year							
Cattle and calves	- 2.4	3.8	- 7.0	- 1.4	- 0.7	0.5	- 2.0
Sheep and lambs	- 13.6	- 11.6	- 10.0	- 21.6	- 8.5	- 22.4	- 13.9
Tourism							
Room occupancy rates for hotels, motels etc. with facilities, March quarter 1996 (%)	61.1	57.7	58.7	55.1	59.5	67.1	59.0
Australian National and State Accounts							
% change in GSP (GDP), Constant Price							
Trend Series							
Sept qtr 1995 to Dec. qtr 1995	0.4	1.1	0.6	0.8	0.8	0.1	0.8
Dec. qtr 1994 to Dec. qtr 1995	2.1	3.4	2.1	3.3	3.2	—	3.3

¹ Australian totals include the ACT and NT.

EXPLANATORY NOTES

INTRODUCTION

1 This publication contains latest figures for a comprehensive range of economic indicators. Statistics shown in this publication are the latest available at the date of preparation and may be subject to revision in subsequent issues. In a number of cases figures appearing in this publication are preliminary and are subject to revision in subsequent issues. Reference should therefore always be made to the latest issue or to the statistical publication on the specific subject.

SEASONAL ADJUSTMENT AND TREND ESTIMATION

2 Seasonal adjustment is a means of removing the estimated effects of normal seasonal variation from the series so that the effects of other influences on the series can be more clearly recognised. Seasonal adjustment does not aim to remove the irregular or non-seasonal influences which may be present in any particular month. This means that month-to-month movements of the seasonally adjusted estimates may not be reliable indicators of trend behaviour.

3 The smoothing of seasonally adjusted series reduces the impact of the irregular components of the seasonally adjusted series and creates trend estimates. These trend estimates are derived by applying a 13-term Henderson-weighted moving average to all months except the last six. The last six monthly trend estimates are obtained by applying surrogates of the Henderson average to the seasonally adjusted series. Trend series are used to analyse the underlying behaviour of the series over time.

4 While this smoothing technique enables estimates to be produced for the latest month, it does result in revisions to the most recent months as additional observations become available. Generally, subsequent revisions become smaller and after 3 months have a negligible impact on the series. Revisions also occur as a result of the annual review of seasonal factors.

5 Users may wish to refer to the ABS Publication *A Guide to Interpreting Time Series – Monitoring 'Trends' – An Overview* (1348.0) for more detailed information on smoothing seasonally adjusted time series data.

RELATED PUBLICATIONS

6 Current publications produced by the ABS are listed in the *Catalogue of Publications and Products* (1101.0). The ABS also issues, on Tuesdays and Fridays, the *Release Advice* (1105.0) which lists publications to be released in the next few days. The *Catalogue* and *Release Advice* are available from any ABS office.

UNPUBLISHED STATISTICS

7 As well as the statistics included in this and related publications, the ABS may have other relevant unpublished data available. Inquiries should be made to Information Inquiries on (002) 20 5800 or to any ABS office.

EFFECTS OF ROUNDING

8 Some figures have been rounded and discrepancies may occur between totals and sums of the component items.

SYMBOLS AND OTHER USAGES

n.a.	not available
n.y.a.	not yet available
..	not applicable
—	nil or rounded to zero
p	preliminary—figure or series subject to revision
r	figure or series revised since previous issue



For more information . . .

The ABS publishes a wide range of statistics and other information on Australia's economic and social conditions. Details of what is available in various publications and other products can be found in the ABS Catalogue of Publications and Products available from all ABS Offices.

ABS Products and Services

Many standard products are available from ABS bookshops located in each State and Territory. In addition to these products, information tailored to the needs of clients can be obtained on a wide range of media by contacting your nearest ABS Office. The ABS also provides a Subscription Service for standard products and some tailored information services.

National Dial-a-Statistic Line

0055 86 400

Steadycom P/L: premium rate 25c/21.4 secs.

This number gives 24-hour access, 365 days a year, for a range of important economic statistics including the CPI.

Internet

<http://www.statistics.gov.au>

A wide range of ABS information is available via the Internet, with basic statistics available for each State, Territory and Australia. We also have Key National Indicators, ABS product release details and other information of general interest.

Sales and Inquiries

Keylink STAT.INFO/ABS
X.400 (C:Australia,PUB:Telememo,O:ABS,FN:STAT,SN:INFO)
Internet stat.info@abs.telememo.au

National Mail Order Service (06) 252 5249
Subscription Service 1800 02 0608

	Information Inquiries	Bookshop Sales
SYDNEY	(02) 268 4611	268 4620
MELBOURNE	(03) 9615 7755	9615 7755
BRISBANE	(07) 3222 6351	3222 6350
PERTH	(09) 360 5140	360 5307
ADELAIDE	(08) 237 7100	237 7582
HOBART	(002) 205 800	205 800
CANBERRA	(06) 252 6627	207 0326
DARWIN	(089) 432 111	432 111



Client Services, ABS, PO Box 10, Belconnen ACT 2616



Produced by the Australian Government Publishing Service
© Commonwealth of Australia 1996

Recommended retail price: \$16.50



2130360007963
ISSN 1034-1803